



**Total Sq Ft:** 3,217  
**Finished Sq Ft:** 1,505  
**Bedrooms:** 2-5  
**Bathrooms:** 2-3  
**Garage:** 2  
**Autumn Leaf Lots:**  
 2, 8, 10, 11, 13, 14, 16

# SINGLELEAF

## INTERIOR

- Custom Alder cabinets
- Tile flooring Throughout
- Large casings and baseboards
- Full tile Master Bath and Shower surrounds
- Gas Fireplace with Tile surround
- Soaker tub in master
- Moen faucet fixtures
- Brushed nickel or oil rubbed bronze hardware
- 9' main floor ceilings
- Recessed can lighting
- Two tone interior paint
- Stainless steel, energy efficient appliances
- Granite countertops throughout
- 90% efficient furnace
- 50 gallon water heater

## EXTERIOR

- 2x6 exterior wall construction
- Front and side landscaping included w/automated sprinkler system
- Raised Panel Steel Garage Door
- Low E vinyl windows
- Blown in insulation



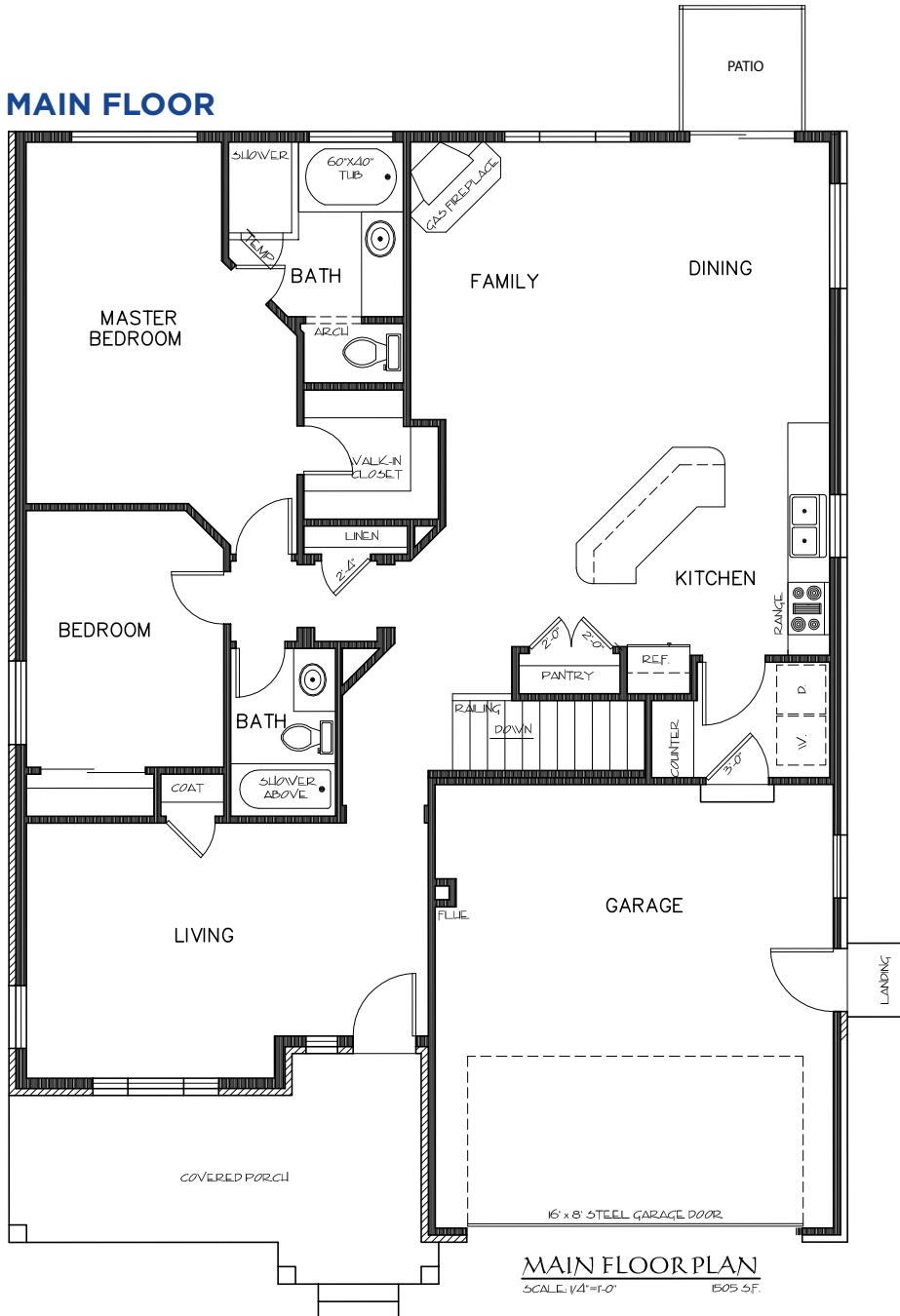
299 South Main Street Suite 2250  
 Salt Lake City, Utah 84111  
 801.708.6878 | [www.BluePineHomes.com](http://www.BluePineHomes.com)

Blue Pine Homes reserves the right to modify or change floor plans, home specifications, designs, features, option, prices, or terms without notice or obligation. Home square footages are approximate and are subject to change.

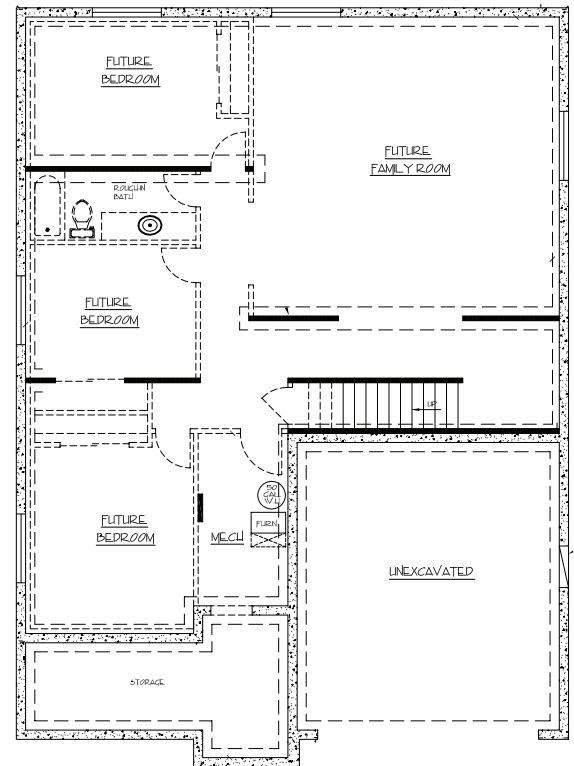
# SINGLELEAF

**Total Sq Ft:** 3,217  
**Finished Sq Ft:** 1,505  
**Bedrooms:** 2-5  
**Bathrooms:** 2-3  
**Garage:** 2  
**Autumn Leaf Lots:**  
 2, 8, 10, 11, 13, 14, 16

## MAIN FLOOR



## UNFINISHED BASEMENT



299 South Main Street Suite 2250  
 Salt Lake City, Utah 84111  
 801.708.6878 | [www.BluePineHomes.com](http://www.BluePineHomes.com)

Blue Pine Homes reserves the right to modify or change floor plans, home specifications, designs, features, option, prices, or terms without notice or obligation. Home square footages are approximate and are subject to change.